

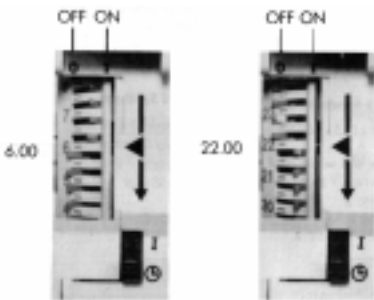
## Digital Time Switch

Order No.	Rated voltage	
7LF5 101	~ 220...240 V	Synchronous
7LF5 141	~ 220...240 V	Quarz

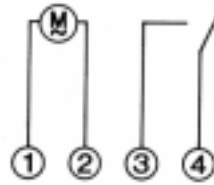
Electrical devices should only be installed and assembled by qualified electricians. The term "electricians" is defined in VDE 0105.

### Setting of switching time.

06.00 - 22.00 hrs ON /  
22.00 - 06.00 hrs OFF

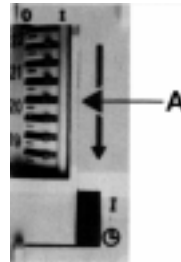


### Switching diagram



### Setting of time of day:

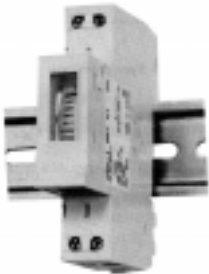
To set the actual time turn the programming wheel in the direction of the arrow (downwards) until the actual time (e.g. 20:15 h) is exactly opposite the triangle indication.



### Manual switching:

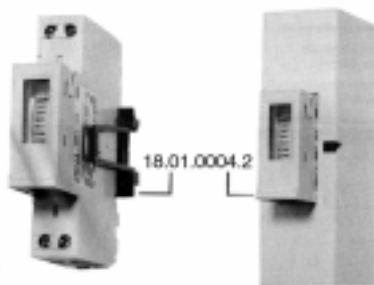
manual switch position = AUTOMATIC  
manual switch position = FIX ON  
- independent of the programming.

### DIN-rail mounting



### Assembly method wall surface mounting

Wall mounting set available as accessory  
Art.-Nr. 18.01.0004.2



	1 S Synchronous	1 Q Quarz
Dimensions (H x B x T) mm:	45 x 17,5 x 68(53)	45 x 17,5 x 68(53)
Supply voltage	see label on instrument	see label on instrument
Switching capacity:	16 (4) A / 250 V~	16 (4) A / 250 V~
Glow lamp load:	1350 w	1350 w
Ambient temperature	-25 °C to +55 °C	-20 °C to +55 °C
Protection class	II	II
Shortest switching time:	30 min.	30 min.
Programmable every:	30 min.	30 min.
Connection diameter	2 x 4 mm <sup>2</sup>	2 x 4 mm <sup>2</sup>
Running reserve	-	50 h